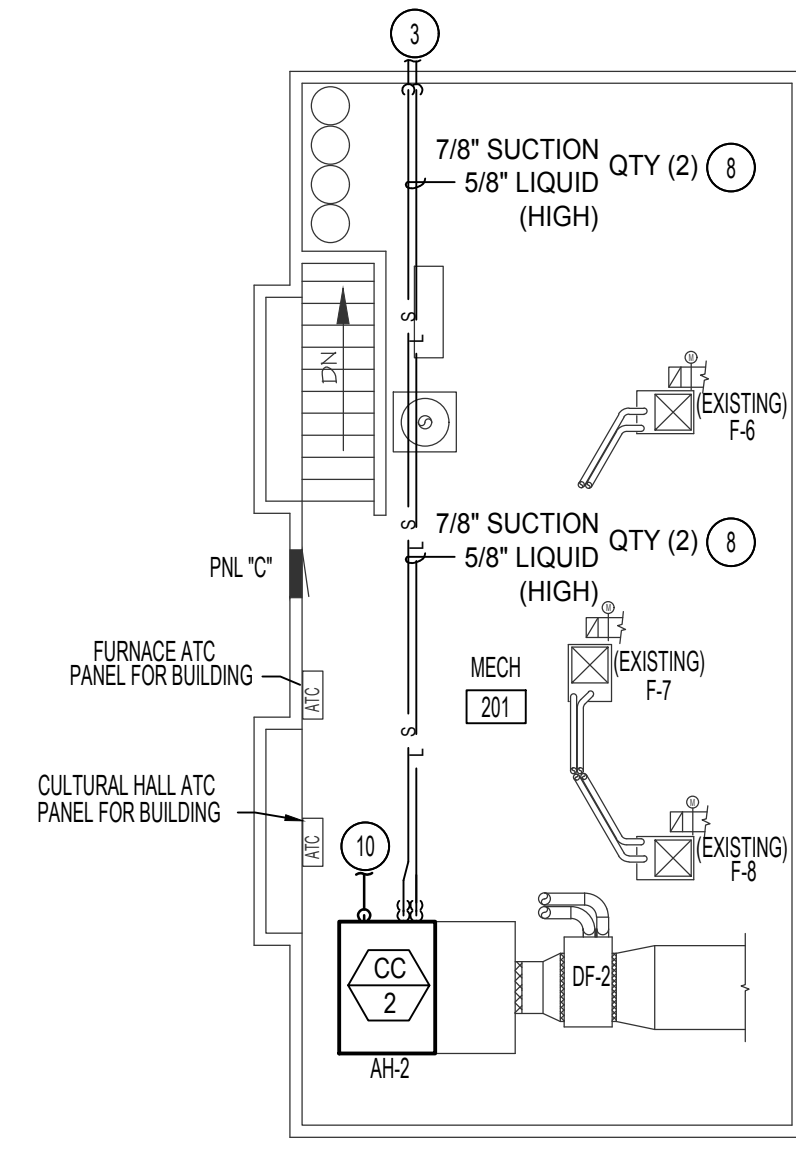
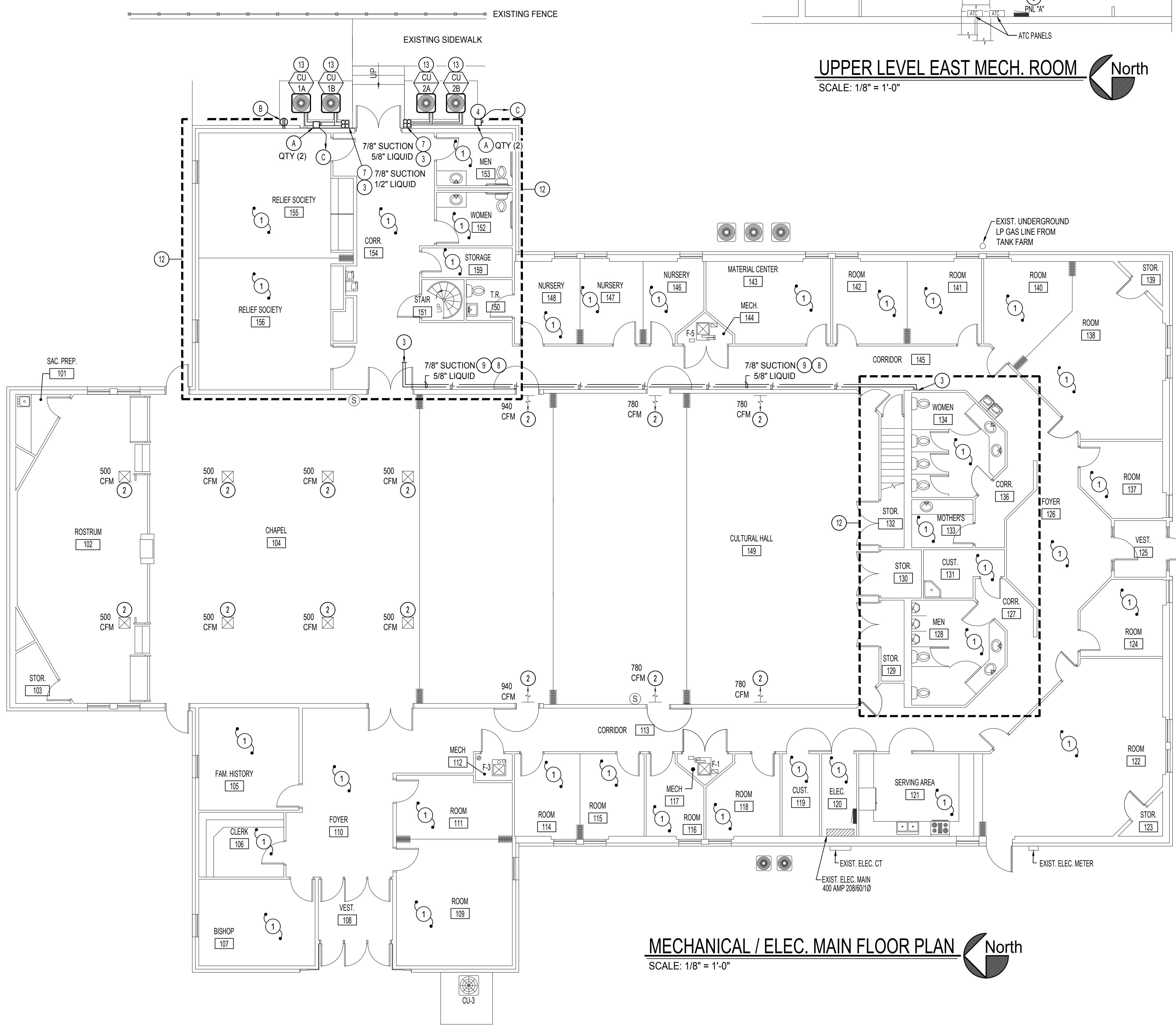


UPPER LEVEL EAST MECH. ROOM North
SCALE: 1/8" = 1'-0"



UPPER LEVEL CULTURAL HALL MECH. ROOM North
SCALE: 1/8" = 1'-0"



MECHANICAL / ELEC. MAIN FLOOR PLAN North
SCALE: 1/8" = 1'-0"

PLAN NOTES:

- 1 NO WORK TO BE DONE IN THIS ROOM. PROTECT DURING CONSTRUCTION.
- 2 BALANCE EXISTING DIFFUSER TO CFM AS INDICATED ON PLANS.
- 3 SEE THIS SHEET FOR CONTINUATION.
- 4 COORDINATE WITH THE GENERAL CONTRACTORS FOR THE NEW CONCRETE PAD.
- 5 SEE DETAIL A & B ON SHEET ME-2
- 6 INSTALL NEW NEMA 3R FUSED DISCONNECT FOR EACH CONDENSING UNIT. SEE DETAIL CME-2.
- 7 DROP REFRIGERANT PIPING DOWN THE EXTERIOR WALL AND COVER WITH REFRIGERANT PIPE COVER. SEE DETAIL D & F ME-2. COLOR TO MATCH DRYVIT COLOR.
- 8 RUN NEW REFRIGERANT LINES ABOVE CEILING. SEE DETAIL GME-2.
- 9 CUT OUT NEW 12x12" PENETRATIONS IN THE CORRIDOR CEILING IF REQUIRED TO INSTALL THE NEW REFRIGERATION LINES. INSTALL NEW ACCESS BOX WITH KEY AFTER THE WORK IS COMPLETE.
- 10 3/4" NEW CONDENSATE DRAIN TO NEAREST EXISTING FLOOR DRAIN. KEEP AWAY FROM FOOT TRAFFIC AS MUCH AS POSSIBLE AND SECURE TO FLOOR. SEE DETAIL A & E ON SHEET ME-2.
- 11 EXISTING SENSOR TO REMAIN. PROTECT DURING CONSTRUCTION.
- 12 SEE UPPER MECHANICAL MEZZANINE PLAN ON THIS SHEET.
- 13 MOUNT NEW CONDENSING UNIT ON RUBBER ISOLATORS, ON NEW CONCRETE PAD. RUN CONTROL WIRING WITH REFRIGERANT PIPING TO EXISTING HONEYWELL RP BOX. INSTALL CU COVER AS PER DETAIL H ON SHEET ME-2.

ELECTRICAL NOTES:

- A INSTALL NEMA 3R FUSED DISCONNECT ON WALL FOR NEW CU'S. RUN 3 - #6 - 3/4" W/ GROUND TO EACH CU, AND TO NEAREST PANEL. SEE DETAIL A & B ON SHEET ME-2.
- B INSTALL GFCI WITH IN USE COVER FOR SERVICE OUTLET. CIRCUIT TO NEAREST 120V 20A UN-SWITCHED CIRCUIT.
- C INSTALL NEW 60A 2P BREAKER IN NEAREST ELECTRICAL PANEL FOR NEW CONDENSING UNITS.

GENERAL NOTES:

- A- THE CONTRACTOR SHALL CHECK AND VERIFY ALL DIMENSIONS AND CONNECTIONS ON THE JOB SITE. ALL WORK SHALL BE EXECUTED FROM MEASUREMENTS TAKEN AT THE SITE.
- B- THE MECHANICAL CONTRACTOR SHALL BE RESPONSIBLE TO INSURE PROPER CODE CLEARANCES FOR ELECTRICAL AND MECHANICAL ACCESS WHEN INSTALLING ANY EQUIPMENT SUPPLIED BY THE MECHANICAL CONTRACTOR.
- C- IT IS CRITICAL THAT THIS CONTRACTOR COORDINATE EQUIPMENT LOCATIONS WITH PIPING, DUCTWORK, ELECTRICAL CONDUIT AND BUILDING STRUCTURE TO INSURE CODE COMPLIANCE.
- D- CEILING DIFFUSERS ARE SHOWN IN APPROXIMATE LOCATIONS. REFER TO LIGHTING PLANS AND REFLECTED CEILING PLAN FOR EXACT LOCATIONS.
- E- DUCT DIMENSIONS CALLED OUT ON DRAWINGS ARE INSIDE FREE AREA DIMENSIONS. ACOUSTICAL DUCT LINER ARE TO BE ADDED TO OVERALL MEASUREMENTS.
- F- ALL DUCTWORK AND PIPING WHICH PASSES THRU FIRE RATED WALLS TO BE FIRE STOPPED WITH APPROVED FOAM OR SEALANT. REFER TO SPECIFICATIONS FOR APPROVED MANUFACTURERS.

FIRE NOTES:

- A- THE CONTRACTOR SHALL FIRE CAULK ALL DUCT OR PIPE PENETRATIONS THRU FIRE RATED WALLS, FLOORS, OR CEILINGS.
- B- THE CONTRACTOR SHALL INSTALL INTUMESCENT FIRE BLOCKS ON PLASTIC PENETRATIONS THRU FIRE RATED WALLS, FLOORS, OR CEILINGS.

MECH. LEGEND	
SYMBOL	DESCRIPTION
①	ELECTRONIC THERMOSTAT
⊠	EQUIPMENT SYMBOL
---	MECH. EQUIPMENT TO BE REMOVED OR RELOCATED
HD	HAND DAMPER
⊠	ROUND BRANCH DUCT WITH HAND DAMPER
⊠	EXPOSED SPIRAL WOUND DUCTWORK
⊠	TURNING VANES
⊠	DUCT TRANSITION
⊠	INSULATED FLEXIBLE DUCT
⊠	RETURN AIR OR EXHAUST GRILLE
⊠	CEILING DIFFUSER
⊠	CEILING MOUNTED EXHAUST FAN

PROFESSIONAL ENGINEER REGISTERED
Donna C. Sudweeks
 STATE OF IDAHO
 WMAVE C. SUDWEES
 Feb 1, 2023

Engineered Systems Associates
 1355 EAST CENTER
 POCATELLO, IDAHO 83201
 PHONE: (208) 233-0501
 FAX: (208) 233-0529
 EMAIL: esa@engsystems.com
 ESA JOB NUMBER: 22030

REVISIONS

NO.	DESCRIPTION